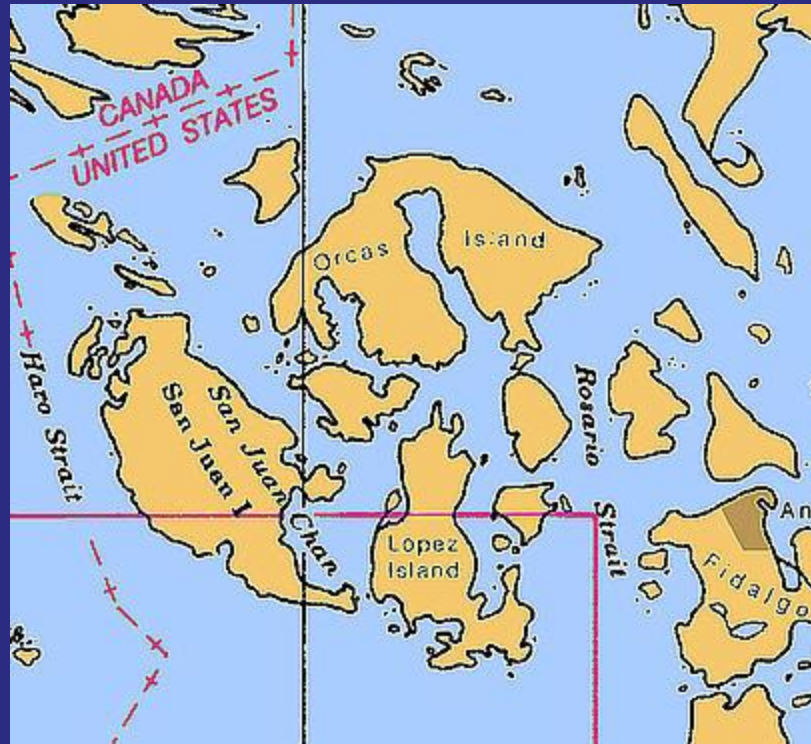
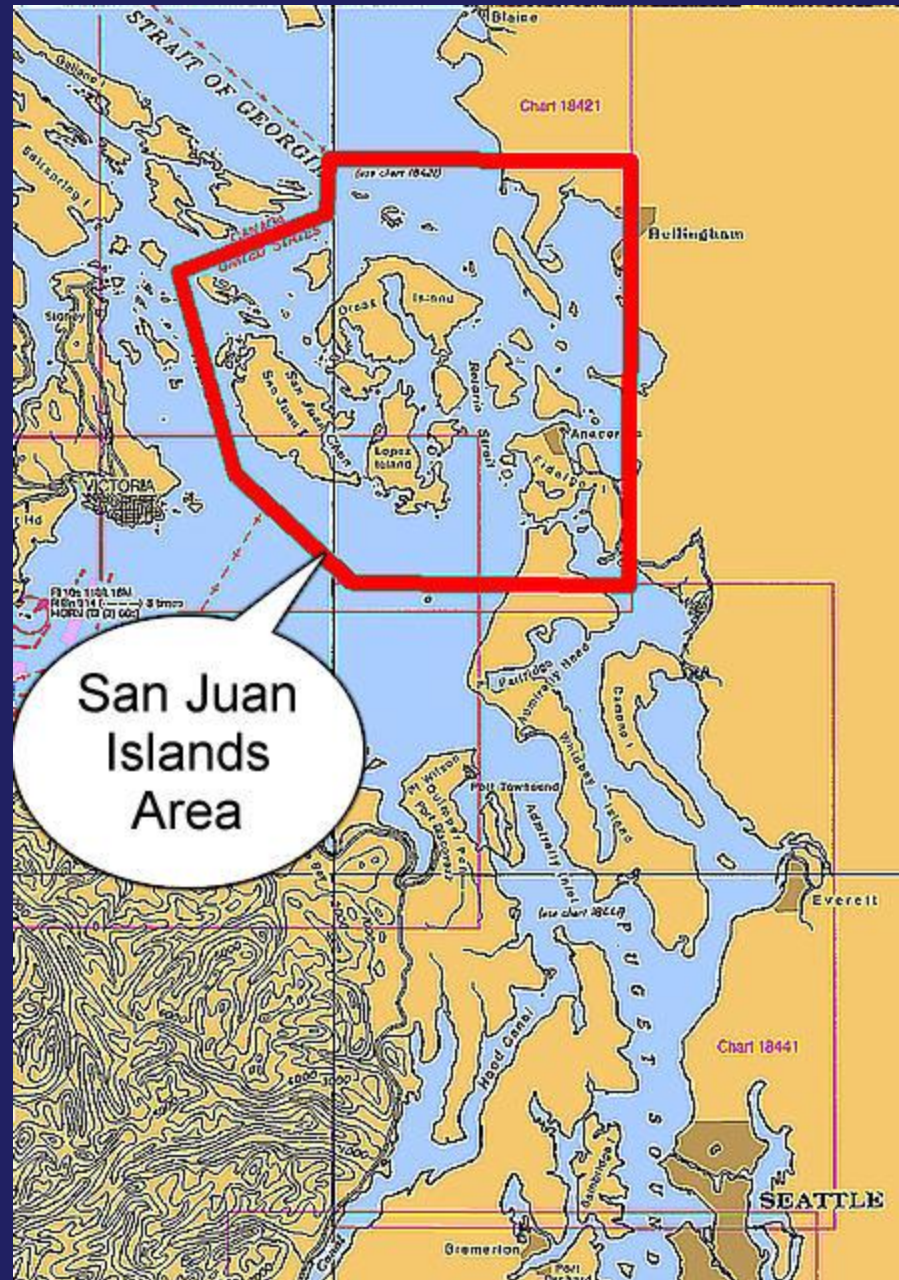


# Cruising the San Juan Islands



By Carl Tenning

# San Juan Islands Overview





# Getting to the San Juan Islands

From the Tacoma Narrows

110 nautical miles

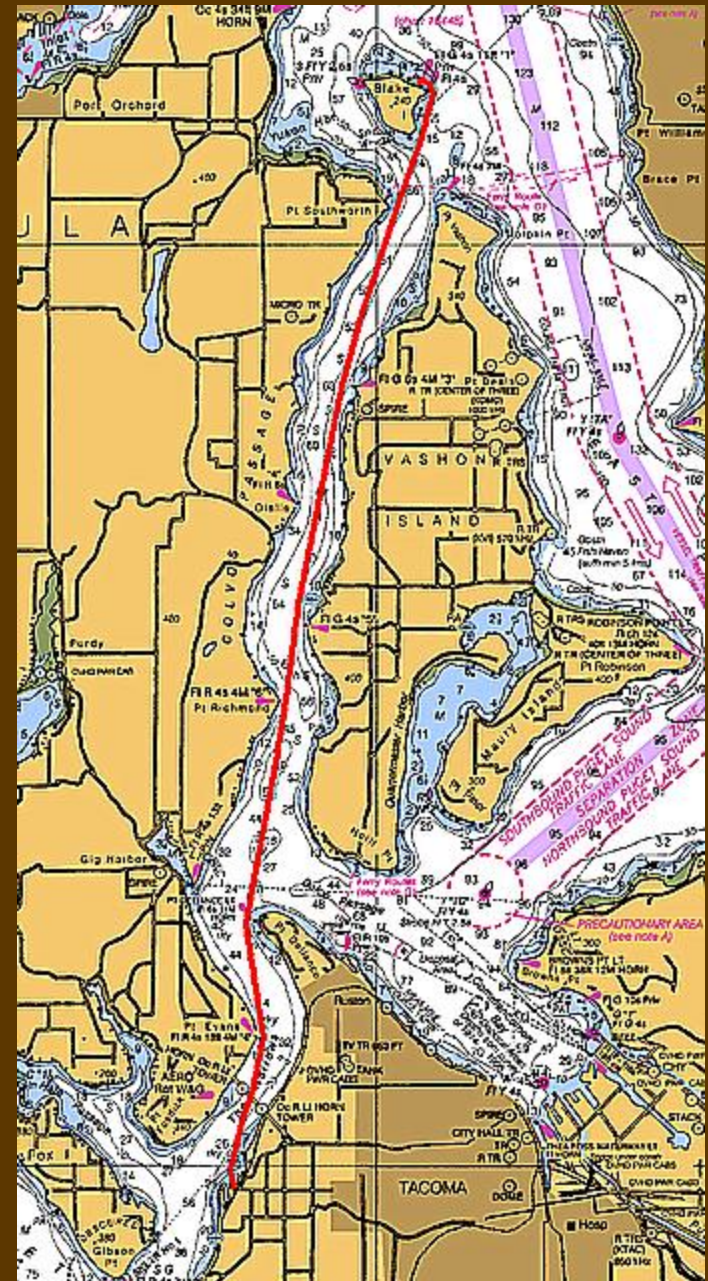
Charts 18448, 18441,  
and 18421 or  
Small Boat Chart Folio,  
18423 and 18445

# Stops to Visit Along the Way

- Blake Island Marine State Park
- Langley Boat Harbor
- Cornet Bay Marine State Park

# Narrows Marina to Blake Island Marine State Park

- 18.6 nm
- 2 hours  
40 minutes  
@ 7.0 knots



- Entrance to Blake Island Inner Harbor

*Stay  
between  
the markers.*



# Approaching Blake Island



# Welcome to Blake Island





- Blake Island Marine State Park

Water and camping on shore.



Across Puget Sound from West Seattle

18.6 nm from Narrows Marina –  
2hr 39min  
@ 7.0 knots

# Tour Boat Arriving



# Salmon Barbecue



# Barbecue Shelters



# Picnic Grounds



# Island Has Deer



# It Also Has Raccoons



- Blake Island Trails





# Blake Island to Langley Boat Harbor

- 32.7 nm
- 4 hours 40 minutes @ 7.0 knots



- Langley Boat Harbor

On Saratoga  
Passage,  
Whidbey  
Island

32.7 nm from  
Blake Is. –  
4h 40min  
@ 7.0 knots

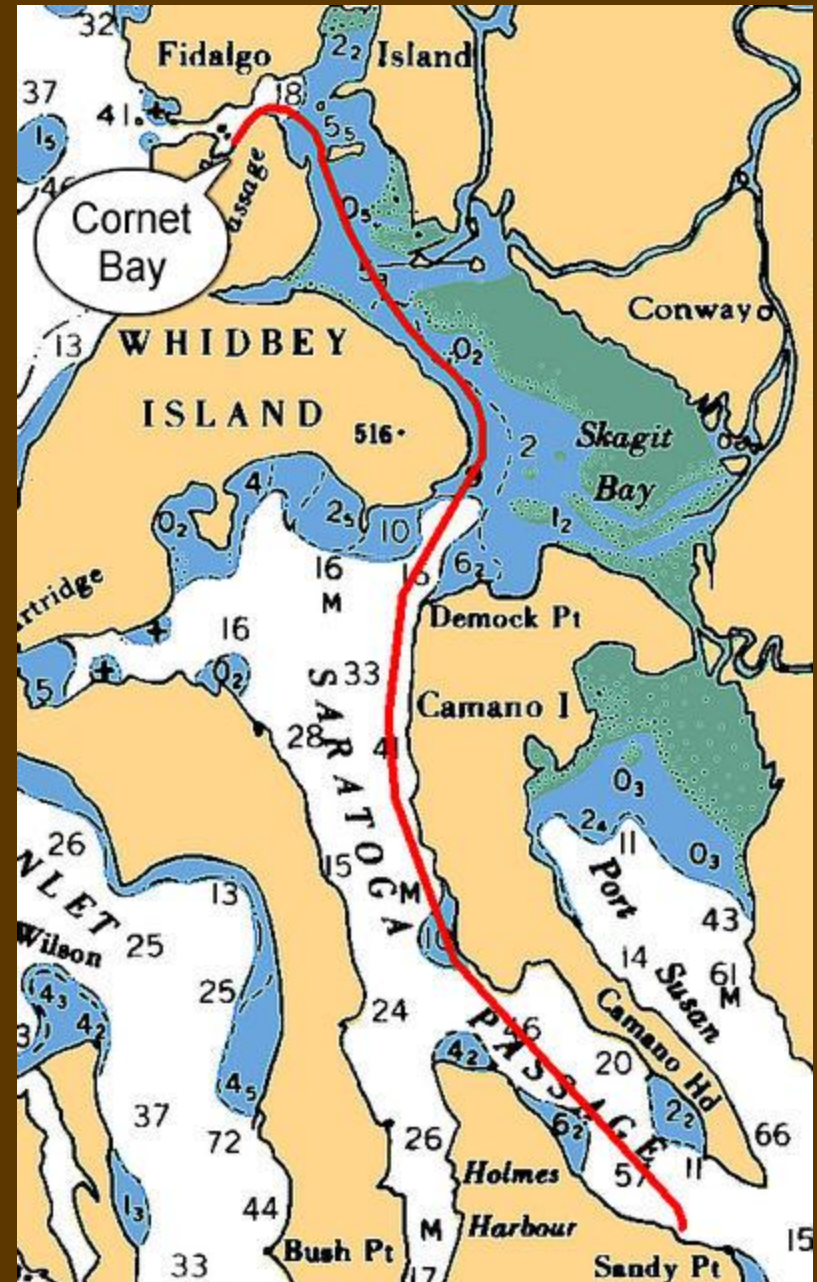


- Langley Boat Harbor



# Langley to Cornet Bay Marine State Park

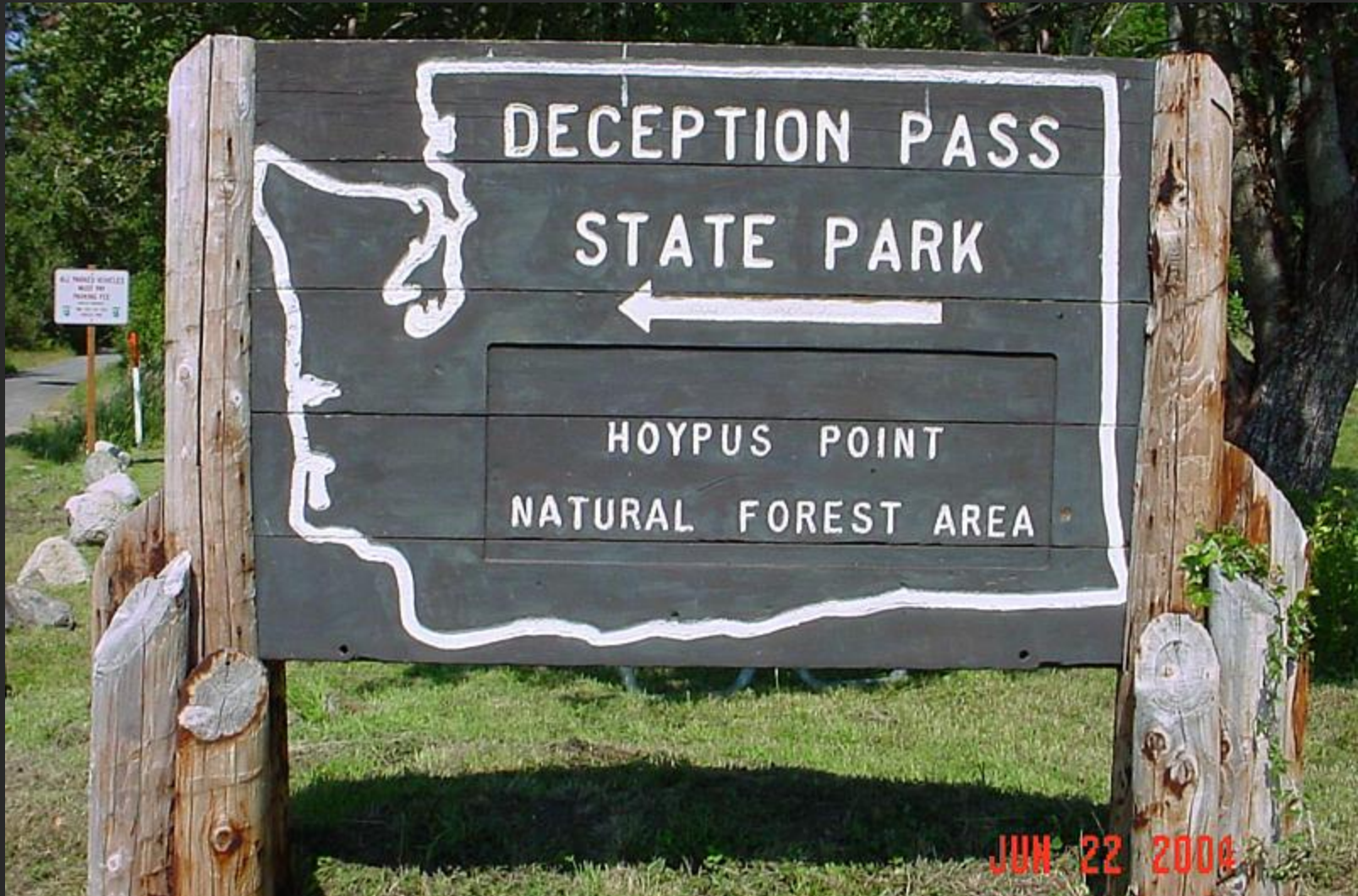
- 27.4 nm
- 3 hours 55 minutes @ 7.0 knots



# Victoria Clipper in Saratoga Passage



- Cornet Bay, Deception Pass State Park



# Boat Launch in Cornet Bay



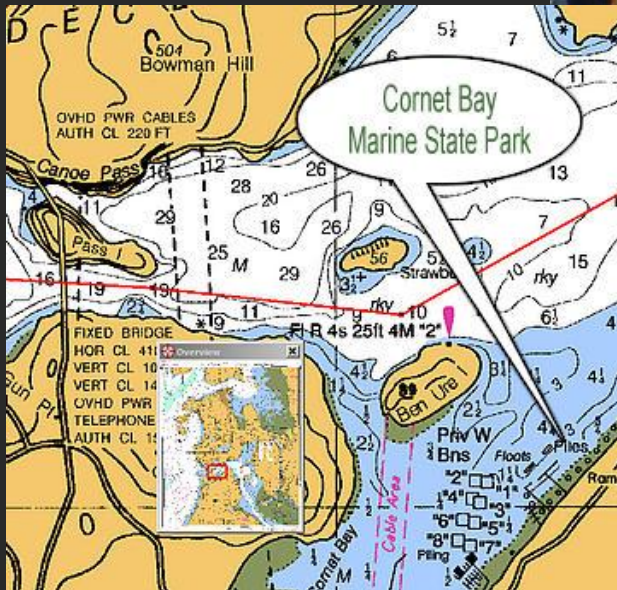
# Launching Mishap





- Cornet Bay, Deception Pass State Park

Water, garbage, and camping on shore.



27.4 nm from Langley Boat Harbor – 3hr 55min @ 7.0 knots

- Cornet Bay, Deception Pass State Park



- Cornet Bay, Deception Pass State Park



- On the Dock in Cornet Bay



- Cornet Bay Marina



- Cornet Bay Marine Services

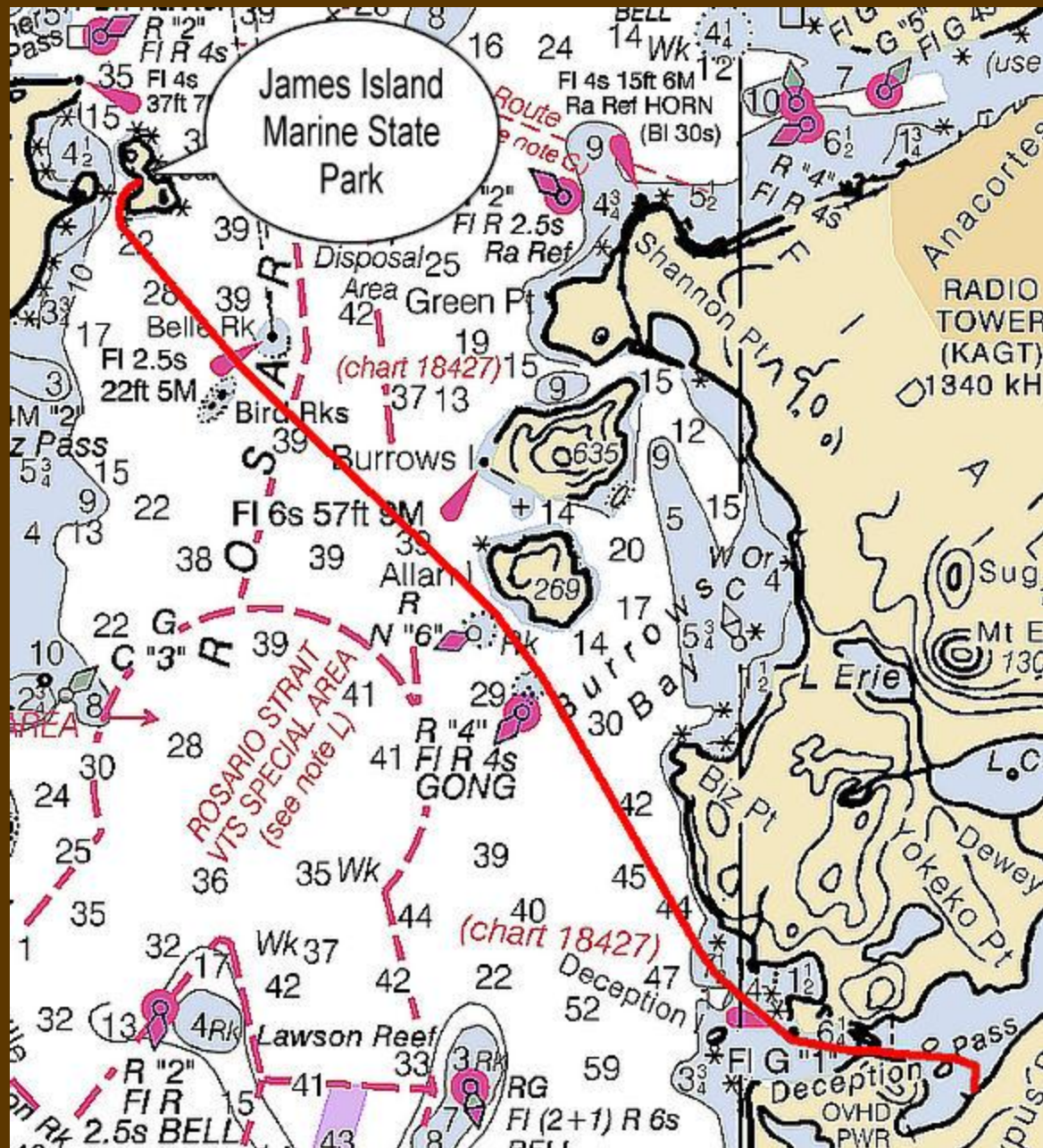


- Cornet Bay Rescue Boat



# Cornet Bay to James Island Marine State Park

- 9.7 nm
- One hour  
23 minutes  
@ 7.0 knots





# Heading Through Deception Pass



# Deception Pass



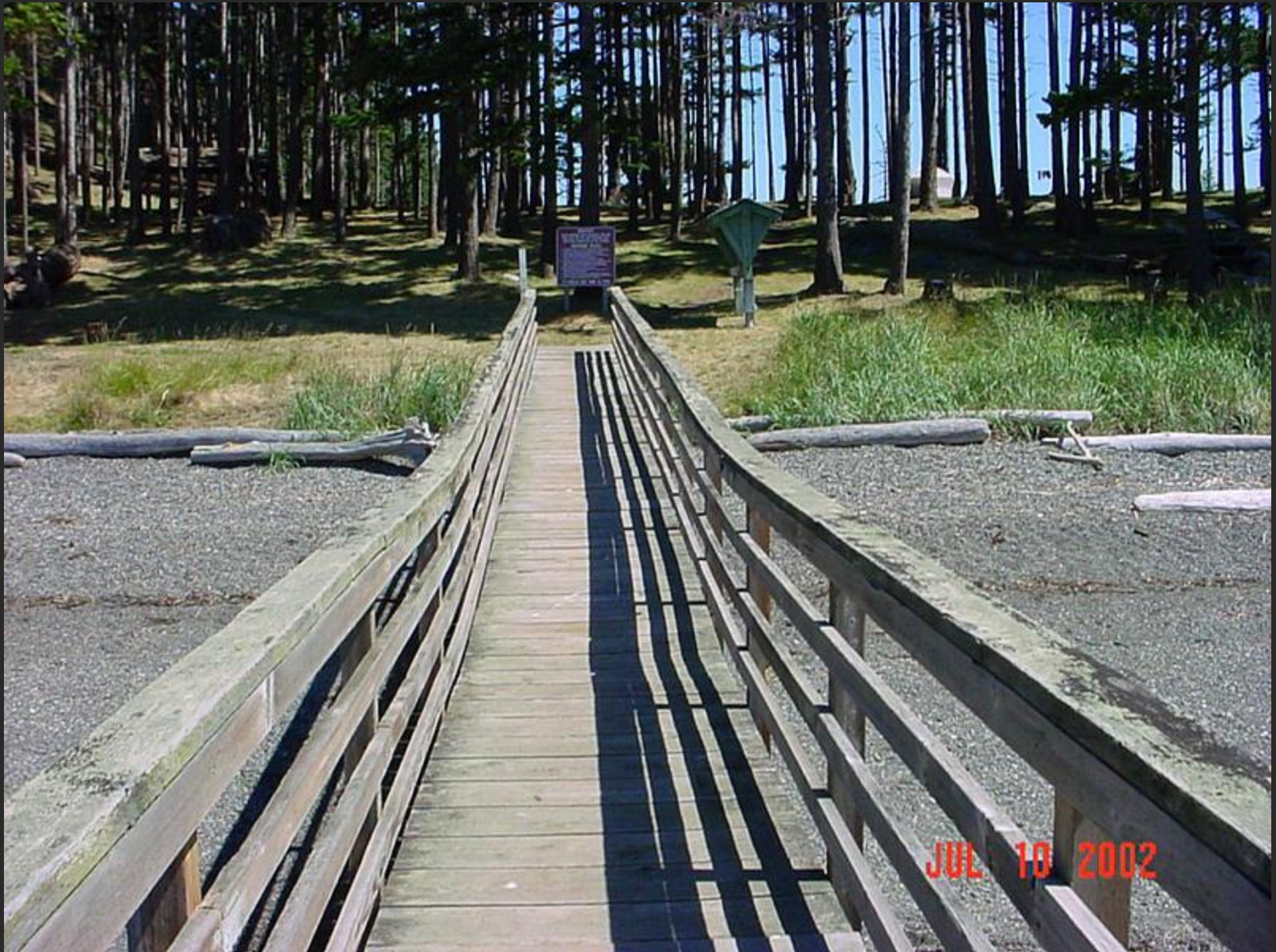
- Log Tow Through Deception Pass



# James Island Marine State Park



# James Island Marine State Park



# James Island Campground



# James Island Campground



# View From James Island





# View From James Island



JUL 10 2002

# James Island Marine State Park



- James Island Marine State Park

Camping only,  
no water.

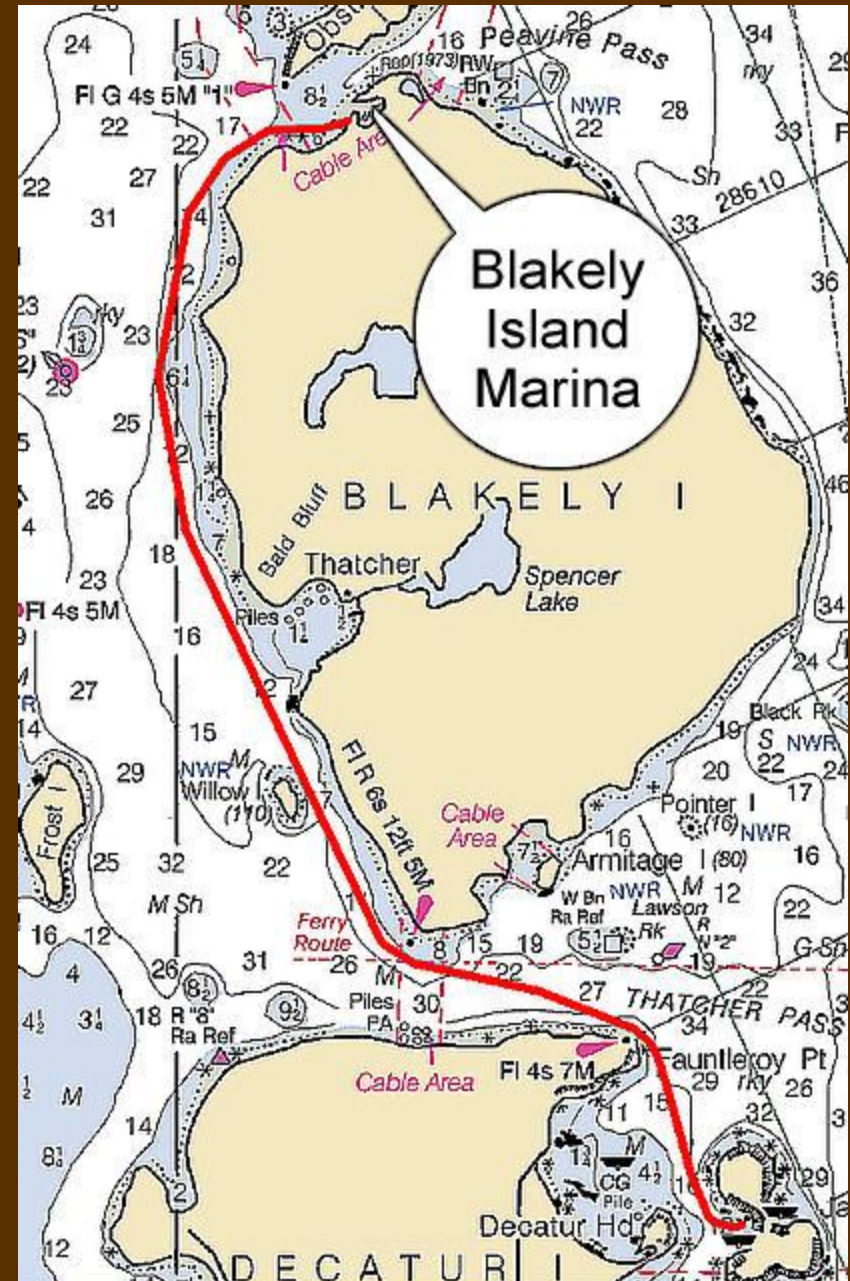


Across Rosario  
Strait from  
Anacortes

9.7 nm from  
Cornet Bay –  
1hr 23min @  
7.0 knots

# James Island to Blakely Island Marina

- 5.9 nm
- 51 minutes  
@ 7.0 knots



# Approaching Blakely Island Marina



# Entry to Blakely Island Marina



# Entering Blakely Island Marina



# Moorage in Blakely Island Marina





# Blakely Island Marina



# Patio in Blakely Island Marina

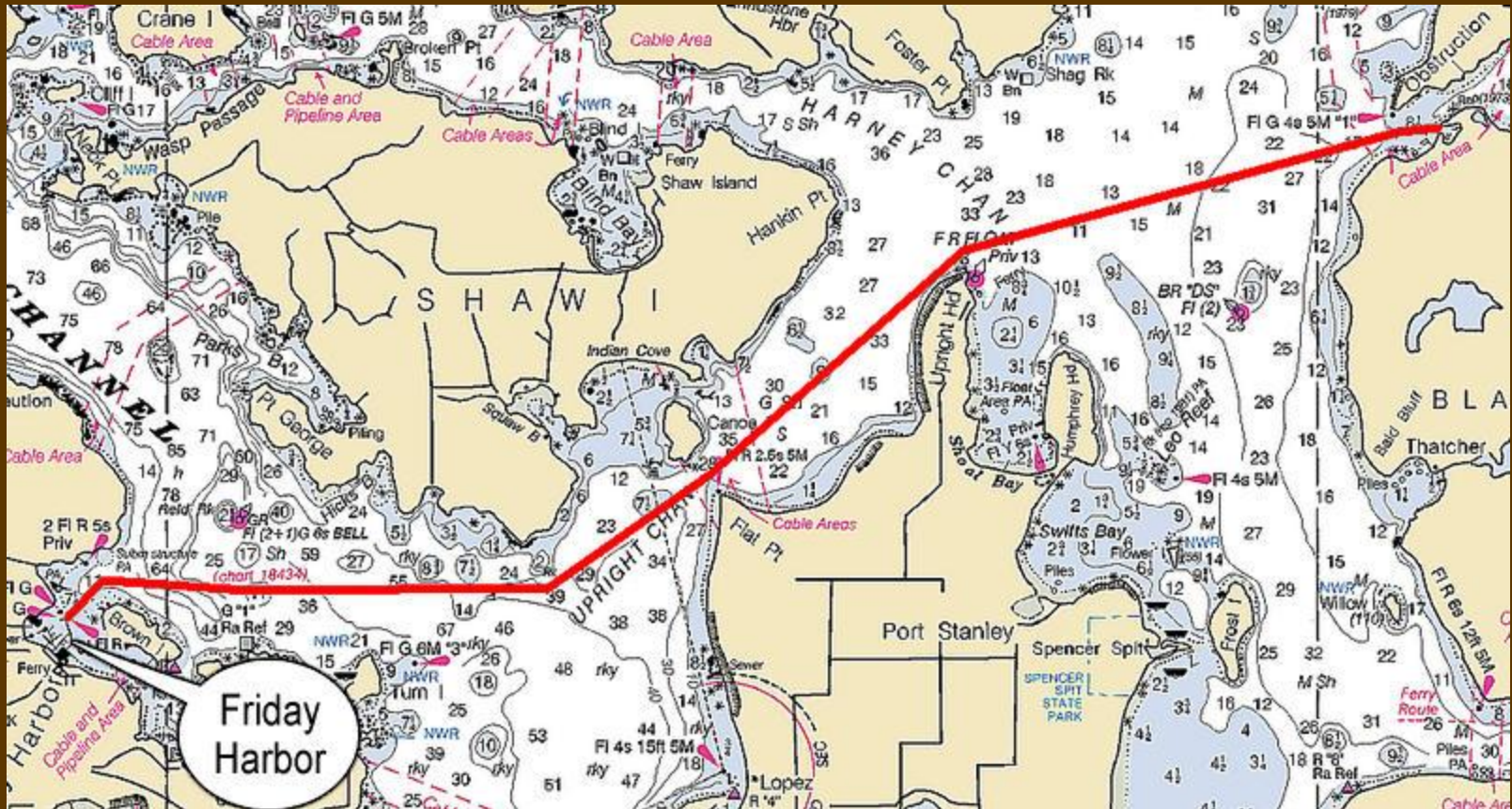


# Free Internet in Blakely Island Marina



# Blakely Island to Friday Harbor Marina

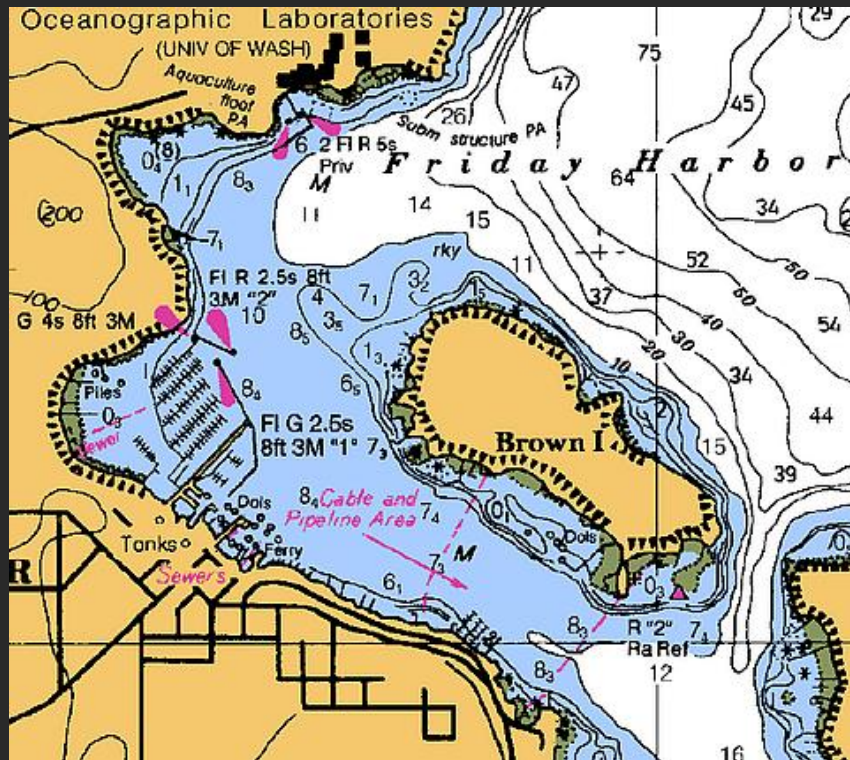
- 9.0 nm from Blakely Island
- One hour 17 minutes @ 7.0 knots



# Friday Harbor, San Juan Island

Also a port of entry

Water, power, and garbage deposit  
on the docks.



# Friday Harbor Entrance



# Friday Harbor Ferry Landing



# Friday Harbor Fuel Dock



JUN 17 2005

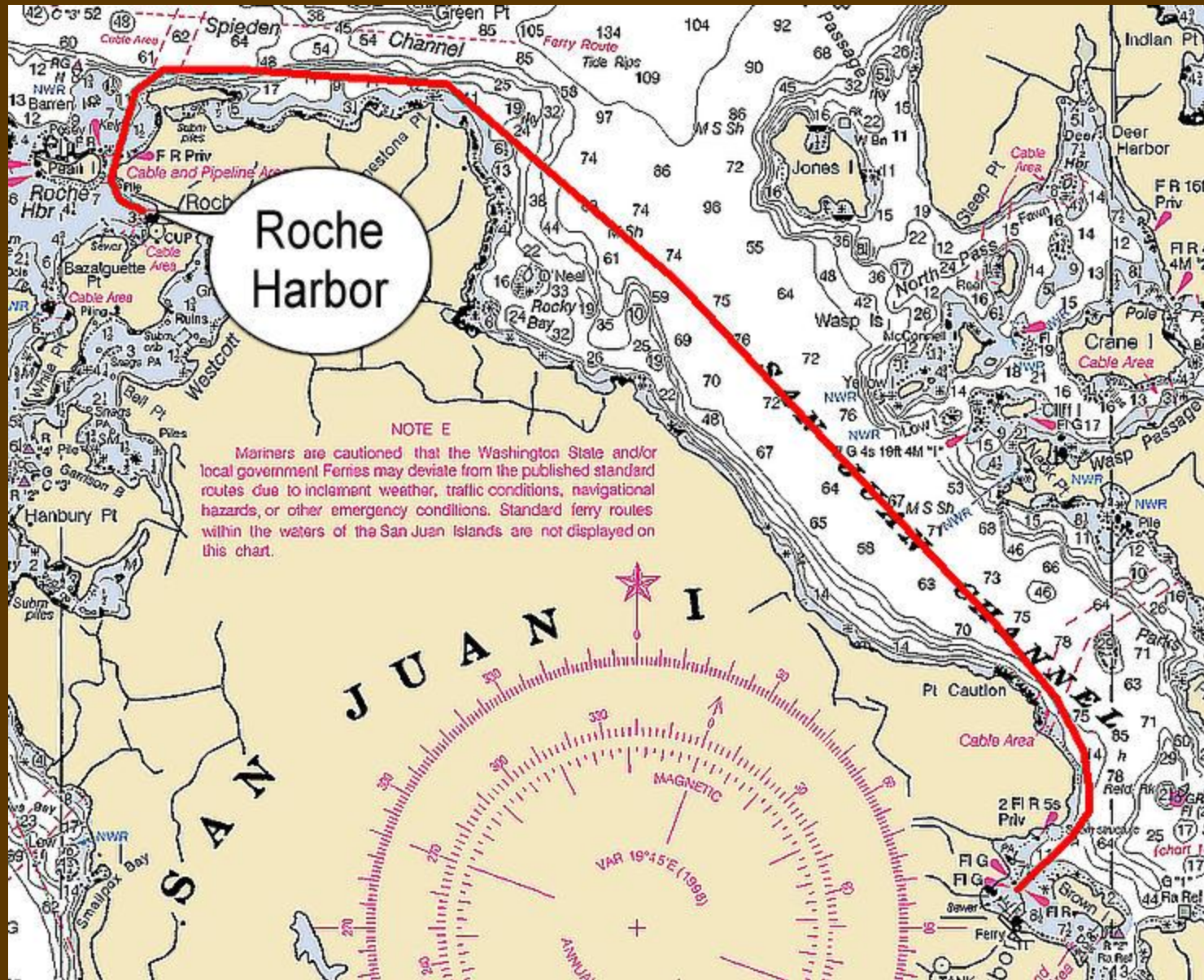


# Friday Harbor Guest Moorage



# Friday Harbor to Roche Harbor Marina

- 9.8 nm from Friday Harbor
- One hour 24 minutes @ 7.0 knots



# Roche Harbor Hotel De Haro



# Roche Harbor Marina



# Roche Harbor Marina



# Roche Harbor Dock



# Roche Harbor Floating Pump-Out



# Roche Harbor Kayak Instruction





# Roche Harbor Gardens



# Roche Harbor Store

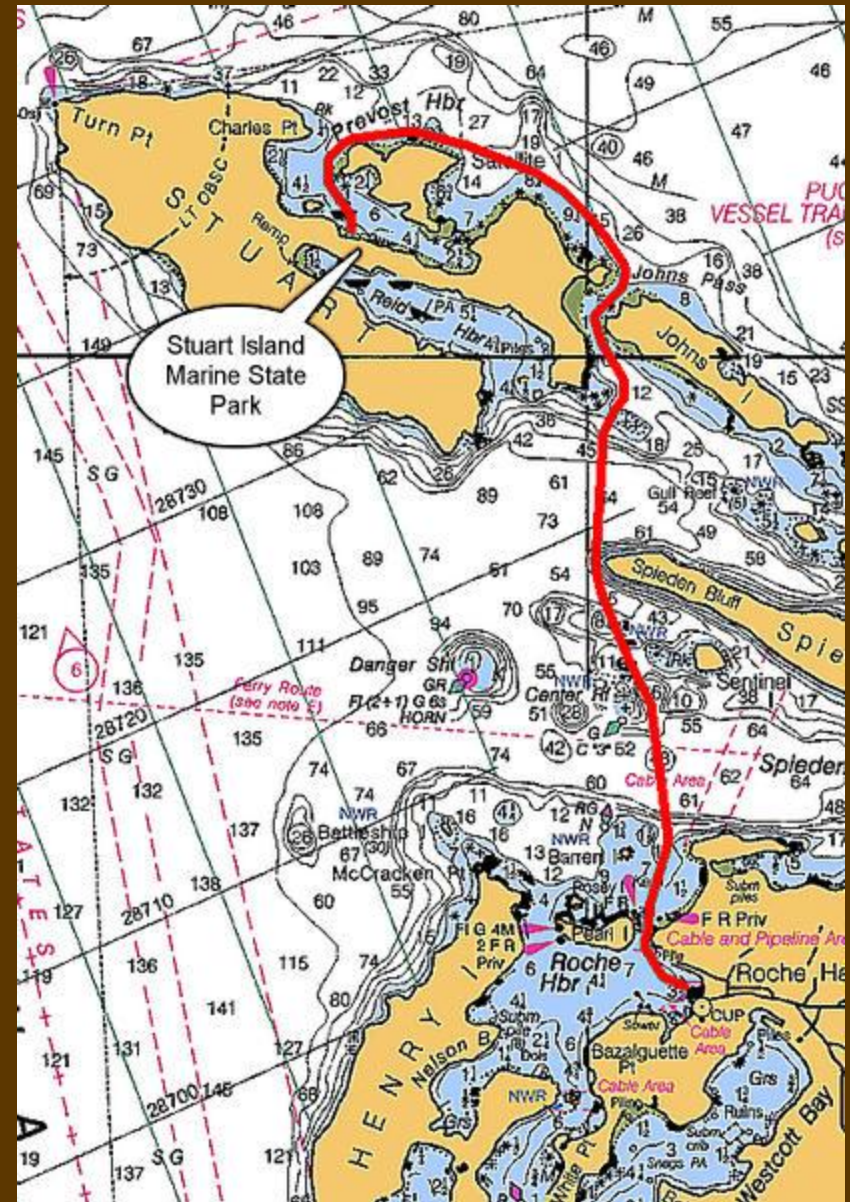


# Roche Harbor Port of Entry



# Roche Harbor to Stuart Island Marine State Park

- 6.4 nm  
to Prevost  
Harbor
- 55 minutes  
@ 7.0 knots



# Windswept Spieden Island



# Teepees on Johns Island



# Prevost Harbor Moorage



Prevost  
Harbor  
Dock





# Stuart Island Marine State Park



# Stuart Island Marine State Park



# Stuart Island Campsite



# Dock in Reid Harbor



# Reid Harbor Dock



# Reid Harbor Moorage



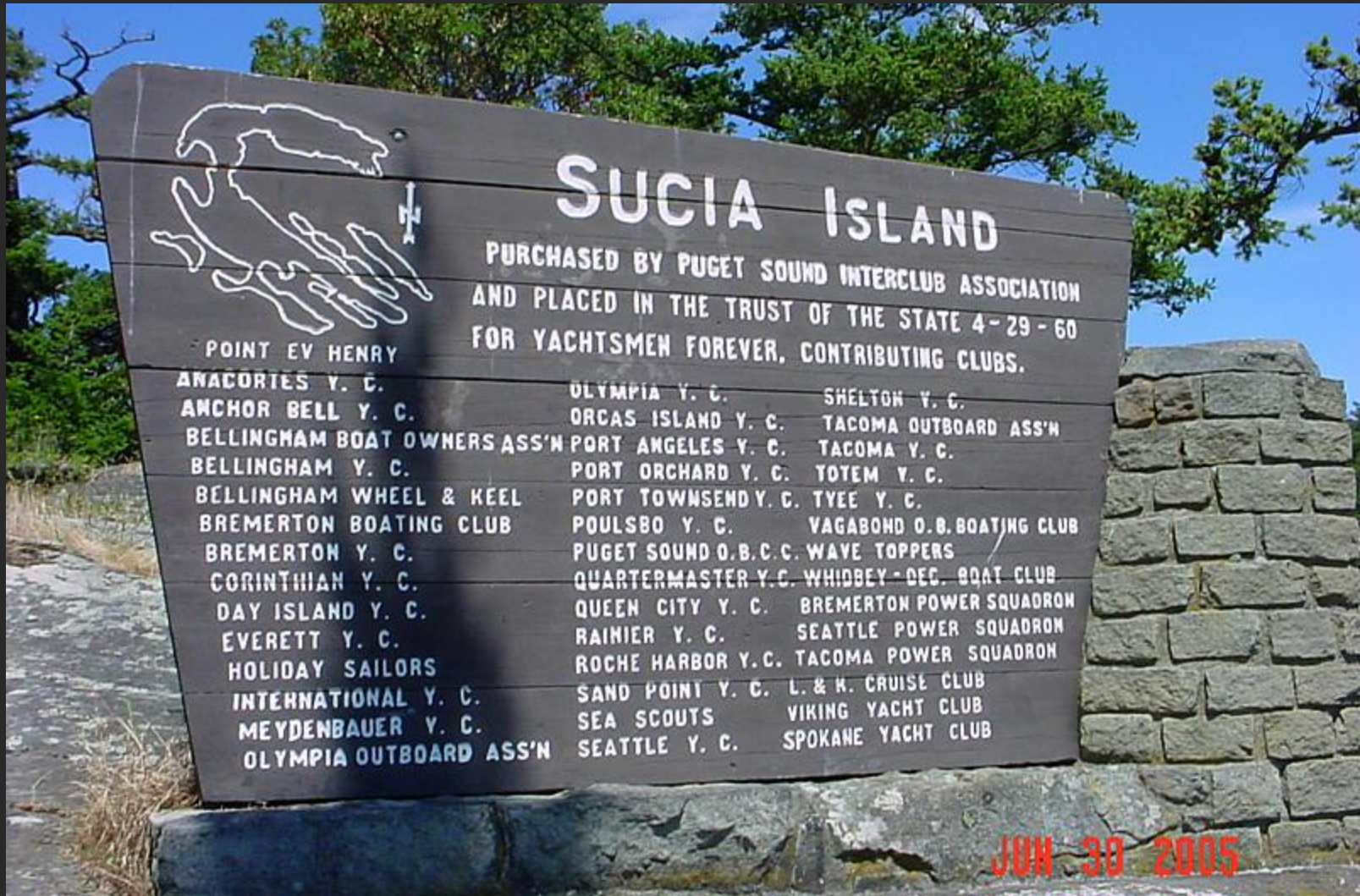
# Stuart Island Marine State Park







# Sucia Island Marine State Park



# Fossil Bay Moorage



# Fossil Bay and Fox Cove



# Fossil Bay Mooring Buoys



# Sucia Island Campground



# Sucia Island Camping



# Sucia Island Campground



- Shelter in Fossil Bay





# Shallow Bay on Sucia Island



JUN 30 2005

- Moorage in Shallow Bay



# The Beach in Shallow Bay



# Echo Bay on Sucia Island



# Sucia Island Sandstone Shoreline



# Sucia Island Sandstone Shoreline



# Sucia Island Trails



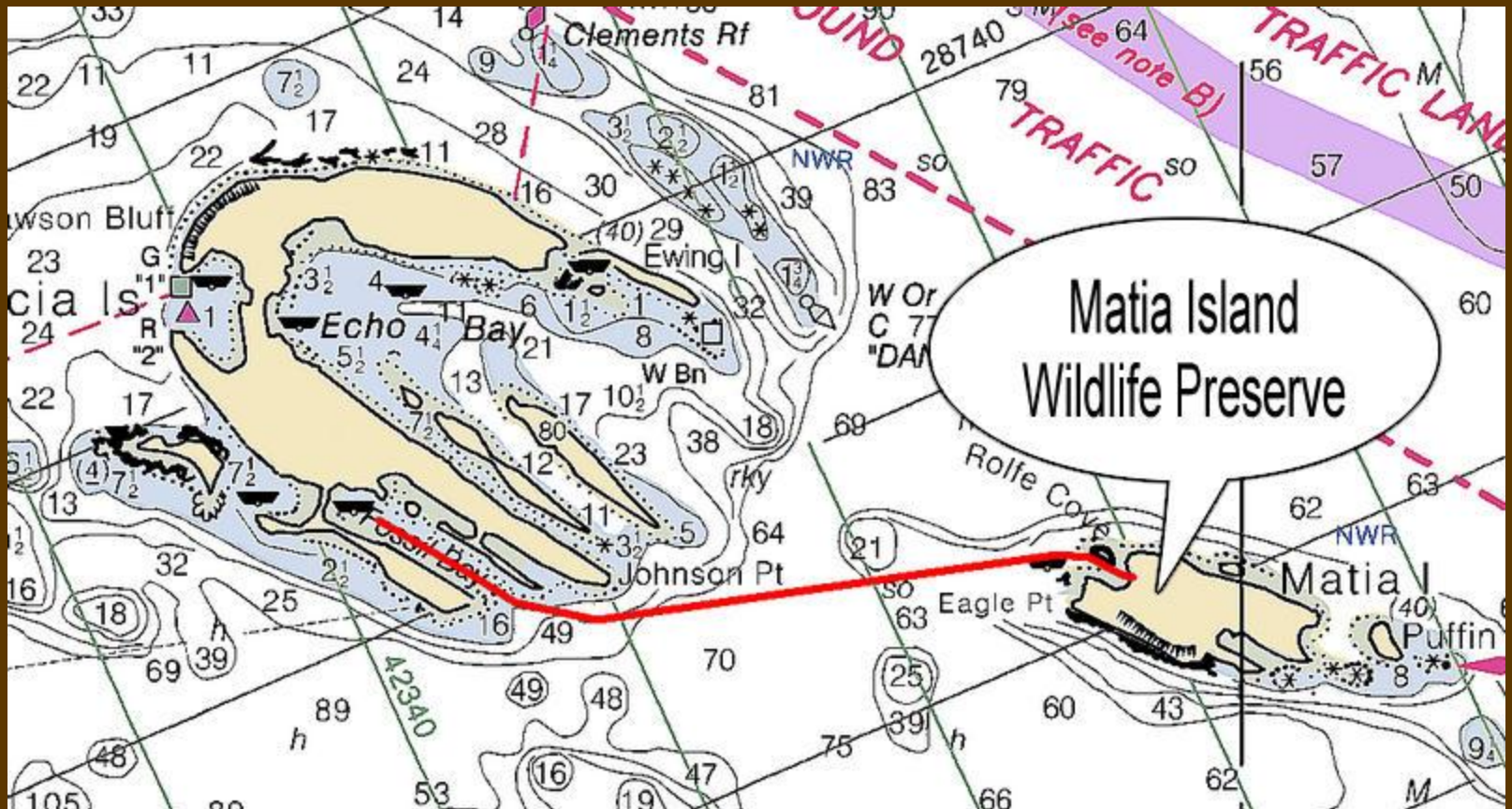
# Sucia Island Composting Toilets





# Sucia Island to Matia Island Marine State Park

- 2.6 nm
- 22 minutes  
@ 7.0 knots



# Matia Island Wildlife Refuge



- Matia Island Dock



# Matia Island Moorage



# Rolfe Cove in Matia Island



JUN 15 2003

# Matia Island Dock



- Campsite on Matia Island



# Matia Island Wilderness Trail





# Matia Island Wilderrest Trail

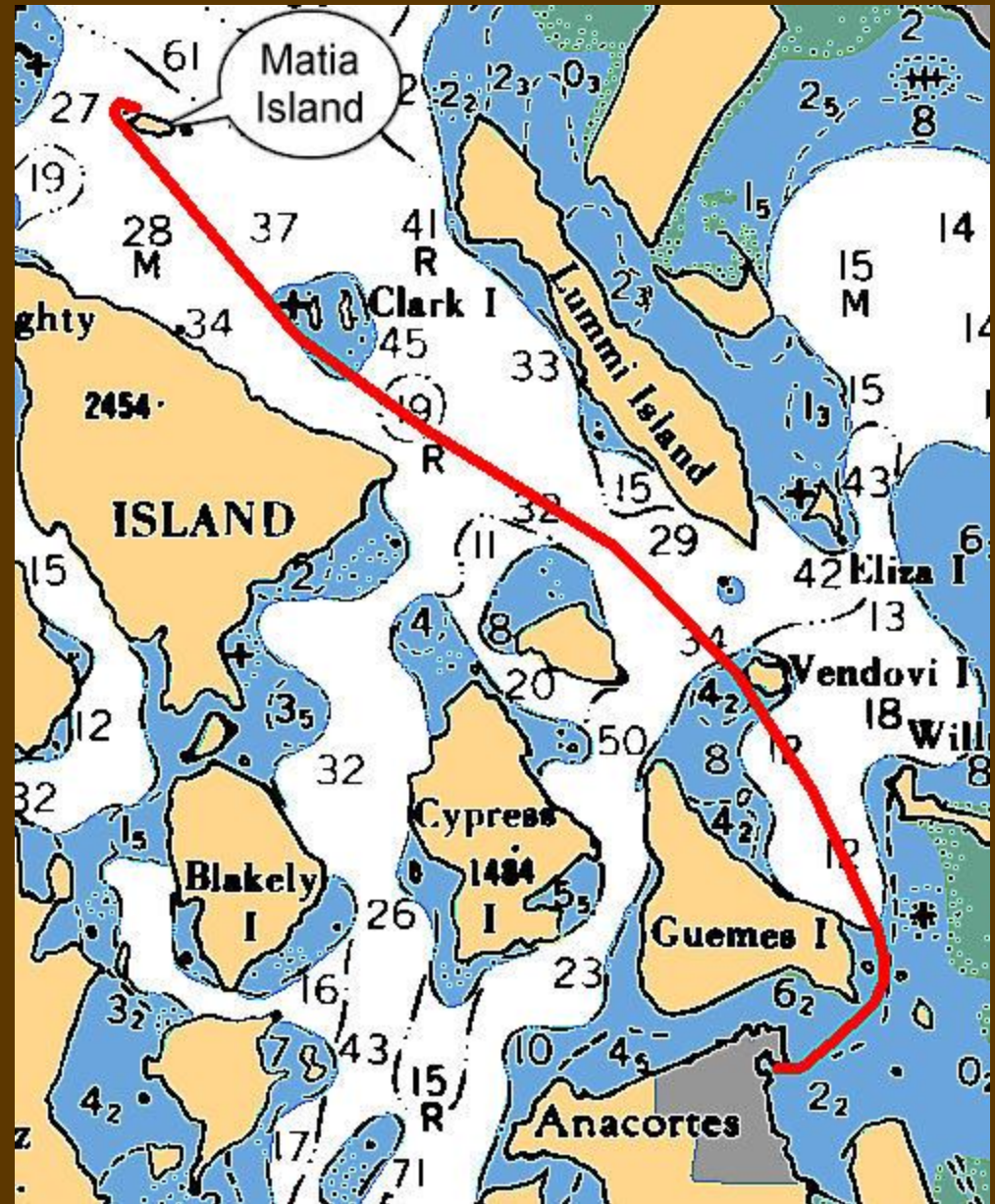


# Cove on Matia Island



# Matia Island to Anacortes

- 20.2 nm
- 2 hours 53 minutes  
@ 7.0 knots





# Harbor Office



# Ramp to Docks



# Anacortes to LaConner

- 9.2 nm
- 1 hour 19 minutes  
@ 7.0 knots



# LaConner Marina





# Guest Moorage in LaConner



# LaConner Bridge



# Round Trip Tacoma Narrows to the San Juan Islands



- 242.4 nm total (187.3 nm from Shilshole)
- 34 hours 38 min. cruising @ 7.0 knots (26 hours 45 min. from Shilshole)

Charts 18448,  
18441,  
and 18421 or  
Small Boat Chart  
Folio,  
18423 and 18445

- Very truly yours,

*Carl Tenning*



**QE**  *Too*

<http://carlten.net>

